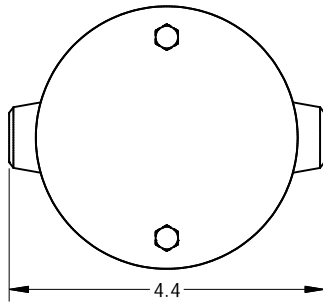
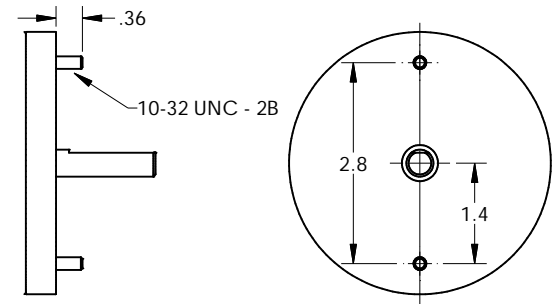


OPTIONAL BRUSH GUIDE

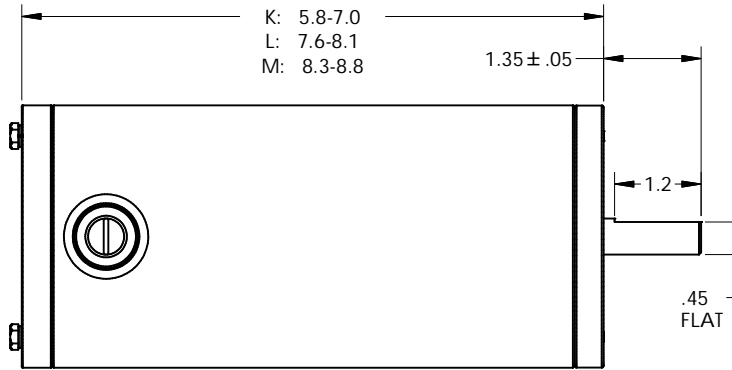


OPTIONAL THRU-BOLT EXTENSION



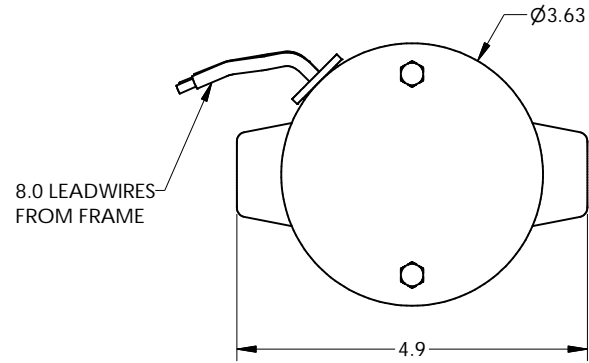
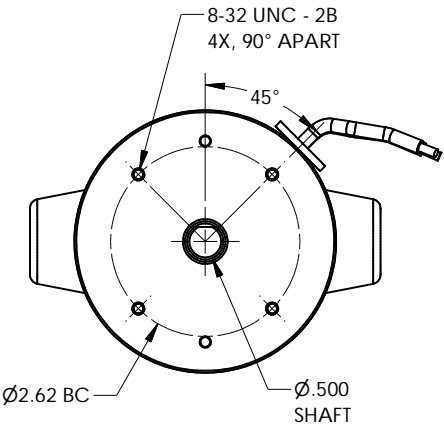
SIZE PER SERIES

- J: 4.8-5.5
- K: 5.8-7.0
- L: 7.6-8.1
- M: 8.3-8.8

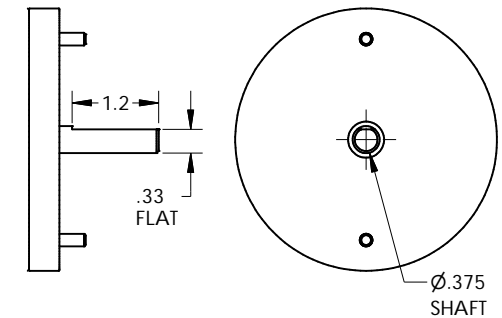


TE EXTERNAL BRUSH

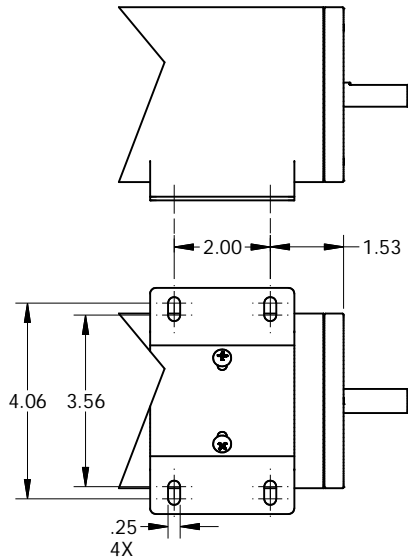
Ø1/2 SHAFT
FACE MOUNT
SIDE EXIT LEADS



OPTIONAL Ø3/8 SHAFT



OPTIONAL FOOT



NOTE: SPECIFICATION ARE FOR REFERENCE ONLY AND ARE SUBJECT TO CHANGE WITHOUT NOTICE

THIS DOCUMENT AND THE INFORMATION CONTAINED HEREIN ARE PROPERTY OF MINNESOTA ELECTRIC TECHNOLOGY INC. AND MUST NOT BE REPRODUCED, COPIED, OR DISCLOSED TO OTHERS EXCEPT AS SPECIFICALLY AUTHORIZED BY MINNESOTA ELECTRIC TECHNOLOGY INC.

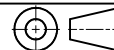
UNLESS OTHERWISE SPECIFIED

ALL DIM ARE IN INCHES.
INTERPRET DIM AND TOL
PER ASME Y14.5M-1994.
DO NOT SCALE.

TOLERANCES
ANGLE - ± 1°
FRACTION - ± 1/64
DECIMAL:

.x = ± .05
.xx = ± .01
.xxx = ± .005
.xxxx = +.0002/- .0003

THIRD ANGLE PROJECTION



DWG NO. 33-TE-EXT	REV A V10
TITLE GENERAL OUTLINE	SIZE C
	SHEET 1 / 1