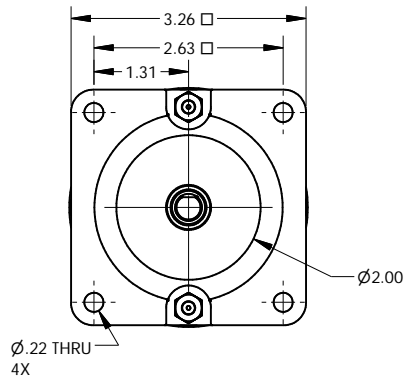
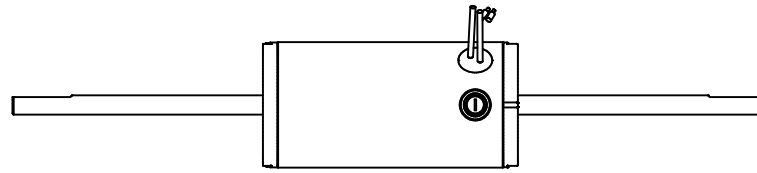


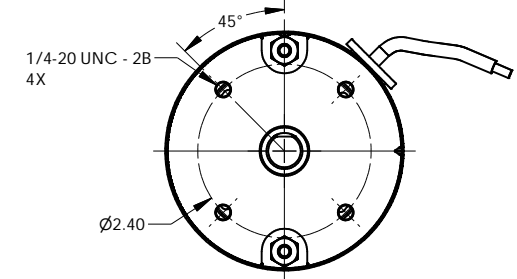
OPTIONAL SQUARE ENDBELL



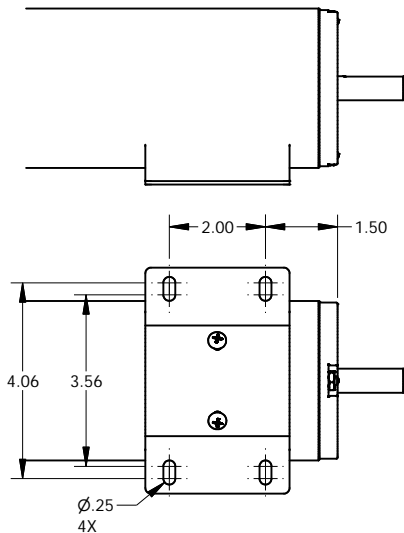
OPTIONAL DUAL SHAFT EXTENSION



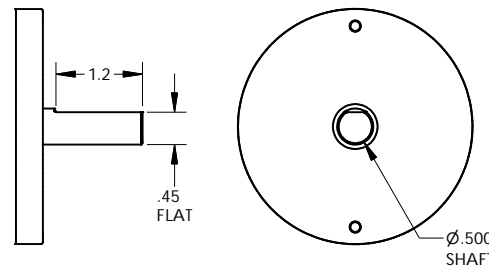
OPTIONAL FACE MOUNT



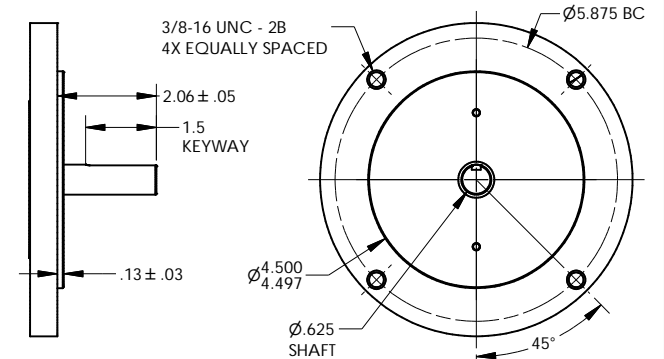
OPTIONAL FOOT



OPTIONAL Ø1/2 SHAFT

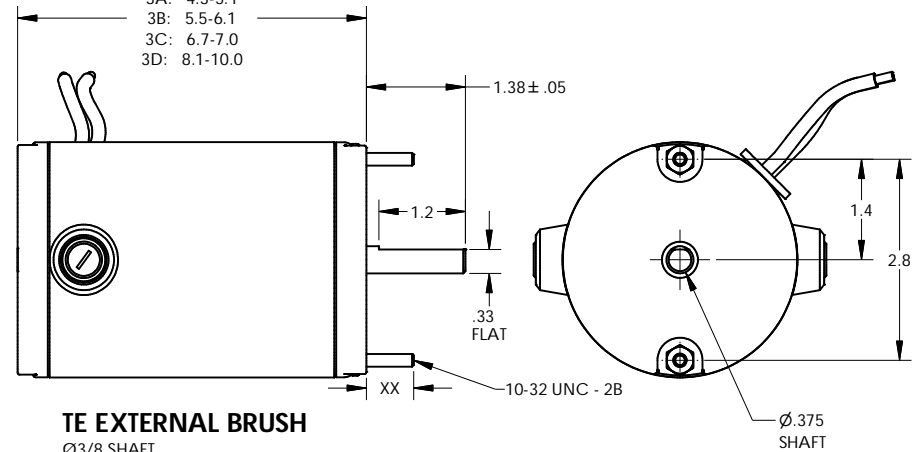
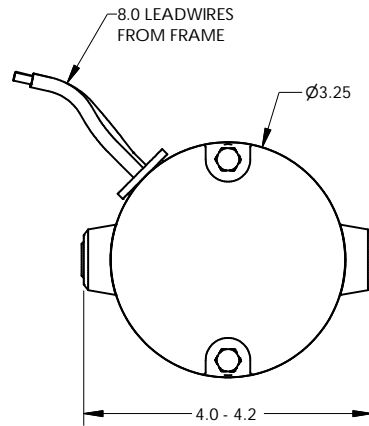


OPTIONAL 56C FACE MOUNT WITH Ø5/8 SHAFT



SIZES PER SERIES

- 3A: 4.3-5.1
- 3B: 5.5-6.1
- 3C: 6.7-7.0
- 3D: 8.1-10.0



TE EXTERNAL BRUSH

Ø3/8 SHAFT
SIDE LEADS
THRU BOLT EXTENSIONS

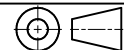
NOTE: SPECIFICATIONS ARE FOR REFERENCE ONLY AND ARE SUBJECT TO CHANGE WITHOUT NOTICE

THIS DOCUMENT AND THE INFORMATION CONTAINED HEREIN ARE PROPERTY OF MINNESOTA ELECTRIC TECHNOLOGY INC. AND MUST NOT BE REPRODUCED, COPIED, OR DISCLOSED TO OTHERS EXCEPT AS SPECIFICALLY AUTHORIZED BY MINNESOTA ELECTRIC TECHNOLOGY INC.

UNLESS OTHERWISE SPECIFIED

ALL DIM ARE IN INCHES.
INTERPRET DIM AND TOL
PER ASME Y14.5M-1994.
DO NOT SCALE.

THIRD ANGLE PROJECTION



TOLERANCES
ANGLE - ± 1°
FRACTION - ± 1/64
DECIMAL:

.x = ± .05
.xx = ± .01
.xxx = ± .005
.xxxx = +.0002/- .0003

MET MINNESOTA ELECTRIC TECHNOLOGY
WWW.METMOTORS.COM
MANKATO, MN 56001 USA

DWG NO. 32-TE-EXT	REV A
TITLE GENERAL OUTLINE	SIZE C
	SHEET 1 / 1