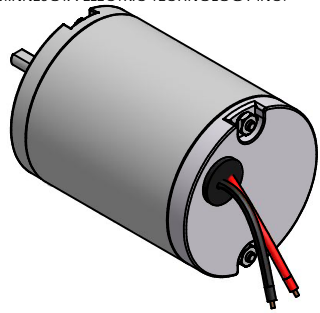
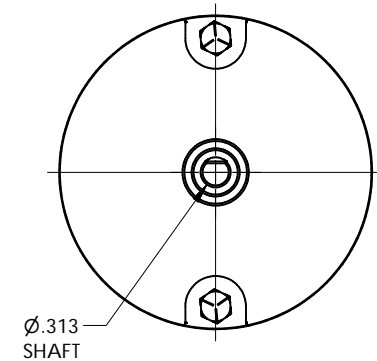
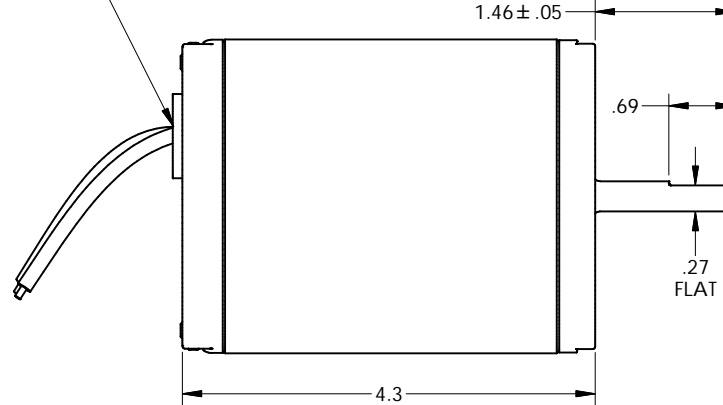
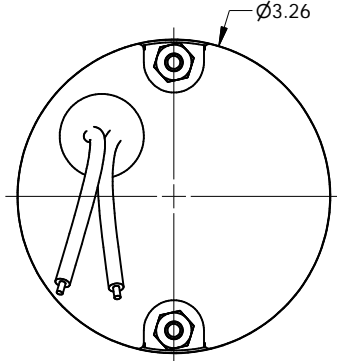
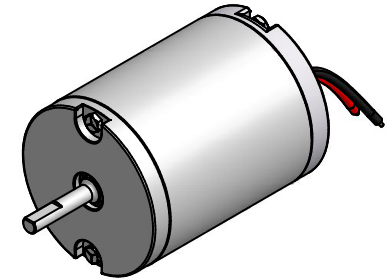


THIS DOCUMENT AND THE INFORMATION CONTAINED HEREIN ARE PROPERTY OF MINNESOTA ELECTRIC TECHNOLOGY INC. AND MUST NOT BE REPRODUCED, COPIED, OR DISCLOSED TO OTHERS EXCEPT AS SPECIFICALLY AUTHORIZED BY MINNESOTA ELECTRIC TECHNOLOGY INC.


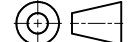
REVISION HISTORY					
REV	ECO	DATE	DESCRIPTION	DWR	CHKR
A	-	11/30/2007	RELEASED	DJG	KW
B	39727	5/30/2008	ADDED TOLERANCE AND DETAIL TO LEAD WIRE ASS'Y, 1" SHRINK TUBE ADDED TO .5 LUG, .25 RING LUG WAS #10 RING LUG	DJG	KW
C	-	10/20/2008	REMOVED PACKARD ASSEMBLY	KAL	TML



16Ga LEADWIRE
8.0 FROM FRAME



- NOTES:
- 1) PART TO BE FREE FROM BURRS AND SHARP EDGES
 - 2) ALL EDGES C.020 MAX UNLESS SPECIFIED
 - 3) ALL CORNERS R.020 MAX UNLESS SPECIFIED
 - 4) TORQUE GRADE 5 BOLTS TO 40 IN/LBS

UNLESS OTHERWISE SPECIFIED		FIRST USED:		 MINNESOTA ELECTRIC TECHNOLOGY WWW.METMOTORS.COM MANKATO, MN 56001 USA	
ALL DIM ARE IN INCHES. INTERPRET DIM AND TOL PER ASME Y14.5M-1994. DO NOT SCALE.	TOLERANCES ANGLE - ± 1° FRACTION - ± 1/64 DECIMAL: . x = ± .05 . xx = ± .01 . xxx = ± .005 . xxxx = +.0002/- .0003	JOB NO: 072701-1-1 MODEL NO: 3A-13112251	DWG NO: 301-0000A-02	REV C	SIZE C
THIRD ANGLE PROJECTION		CREATED: DJG 11/30/2007	TITLE OUTLINE	REV v9	SHEET 1 / 1
		MATERIAL:	SOURCE PRINT:		