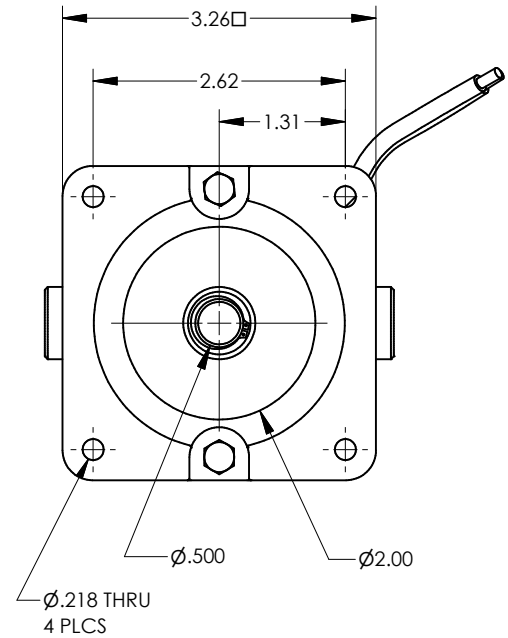
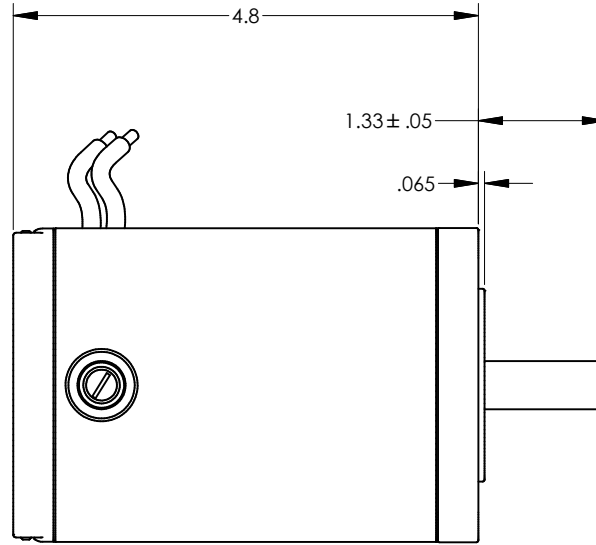
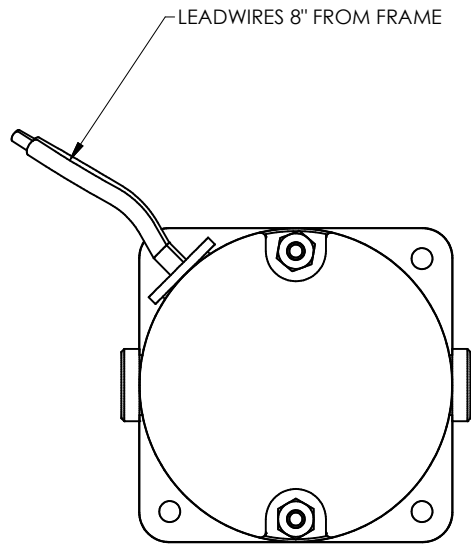

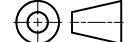


THIS DOCUMENT AND THE INFORMATION CONTAINED HEREIN ARE PROPERTY OF MINNESOTA ELECTRIC TECHNOLOGY INC. AND MUST NOT BE REPRODUCED, COPIED, OR DISCLOSED TO OTHERS EXCEPT AS SPECIFICALLY AUTHORIZED BY MINNESOTA ELECTRIC TECHNOLOGY INC.

REVISION HISTORY					
RE	ECO	DATE	DESCRIPTION	DWR	CHKR
C	32959	7-16-1991	RELEASED	JCE	
D	39308	5-31-2006	CHANGED LOCTOTE OPP LOCATION	DJG	KW
Q	40639	3/22/2016	REDRAWN INTO INVENTOR	PLH	BP



NOTES:  
 1) SEALCOAT ALL MATING SURFACES  
 2)LOCTITE DRIVE END BEARING TO SHAFT AT BEARING PRESS  
 (USE 359-99911-00)

UNLESS OTHERWISE SPECIFIED		FIRST USED:		 MINNESOTA ELECTRIC TECHNOLOGY WWW.METMOTORS.COM MANKATO, MN 56001 USA	
ALL DIM ARE IN INCHES. INTERPRET DIM AND TOL PER ASME Y14.5M-1994. DO NOT SCALE.	TOLERANCES ANGLE - ± 1° FRACTION - ± 1/64 DECIMAL: .x = ± .05 .xx = ± .01 .xxx = ± .005 .xxxx = +.0002/-0.0003	JOB NO: 91-1886 MODEL NO: 3a-1210272C	CREATED: JCE 7/16/1991	DWG NO: <b>300-1006A-02</b>	REV <b>Q</b> v2
THIRD ANGLE PROJECTION		MATERIAL:	SOURCE PRINT:	TITLE <b>OUTLINE</b>	SIZE <b>C</b>
					SHEET 1 / 1