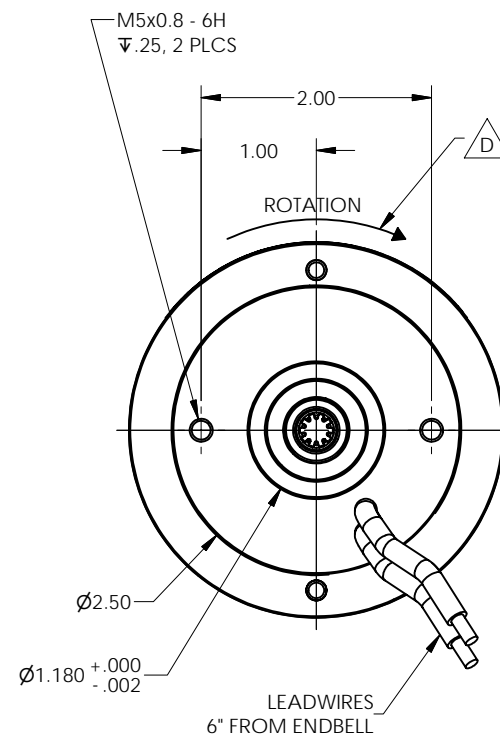
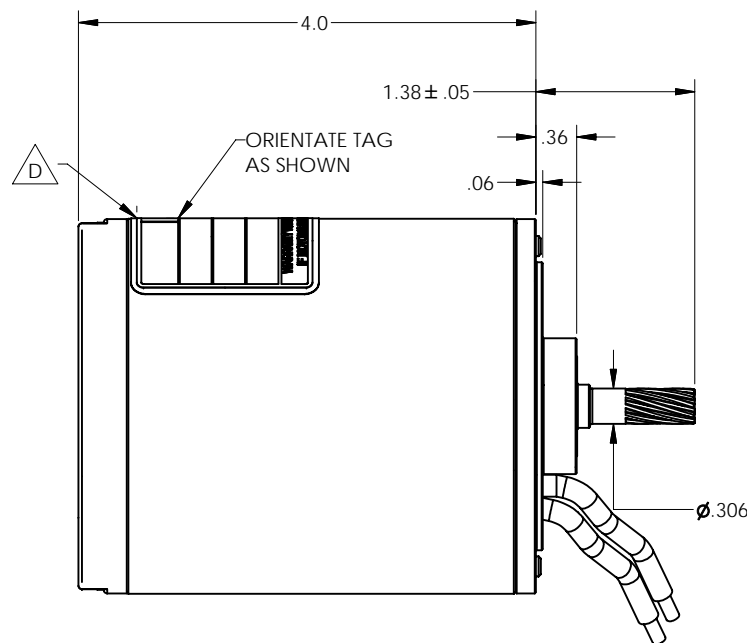
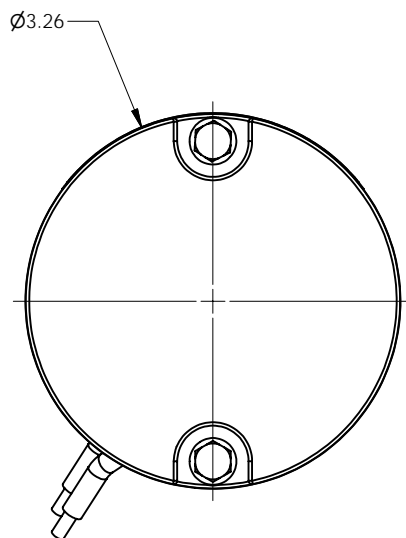
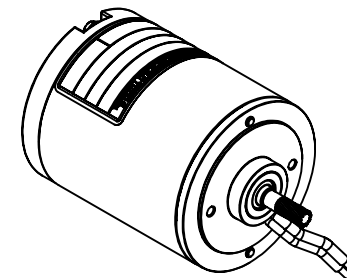




THIS DOCUMENT AND THE INFORMATION CONTAINED HEREIN ARE PROPERTY OF MINNESOTA ELECTRIC TECHNOLOGY INC. AND MUST NOT BE REPRODUCED, COPIED, OR DISCLOSED TO OTHERS EXCEPT AS SPECIFICALLY AUTHORIZED BY MINNESOTA ELECTRIC TECHNOLOGY INC.

REVISION HISTORY					
REV	ECO	DATE	DESCRIPTION	DWR	CHKR
B	39195	11/8/2005	NEW DRIVE ENDBELL	PLH	KW
C	39217	12/28/2005	SHORTEN SHAFT AND FRAME .125	PLH	KW
D	-	11/6/2008	ADDED ROTATION AND TAG LOCATION TO PRINT	DJG	SS



UNLESS OTHERWISE SPECIFIED		FIRST USED: JOB NO: 069899-1-1 MODEL NO: 3A-1203535C		 MINNESOTA ELECTRIC TECHNOLOGY WWW.METMOTORS.COM MANKATO, MN 56001 USA	
ALL DIM ARE IN INCHES. INTERPRET DIM AND TOL PER ASME Y14.5M-1994. DO NOT SCALE.	TOLERANCES ANGLE - ± 1° FRACTION - ± 1/64 DECIMAL: .x = ± .05 .xx = ± .01 .xxx = ± .005 .xxxx = +.0002/- .0003	CREATED: pete 9/1/2005	MATERIAL:	DWG NO. 301-9009A-01	REV D V18
THIRD ANGLE PROJECTION		SOURCE PRINT:	TITLE OUTLINE	SIZE C	SHEET 1 / 1