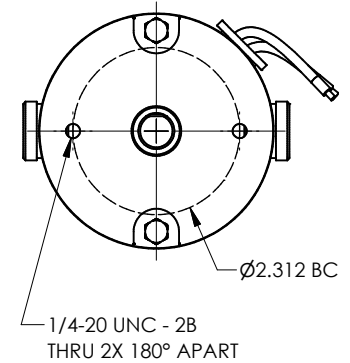
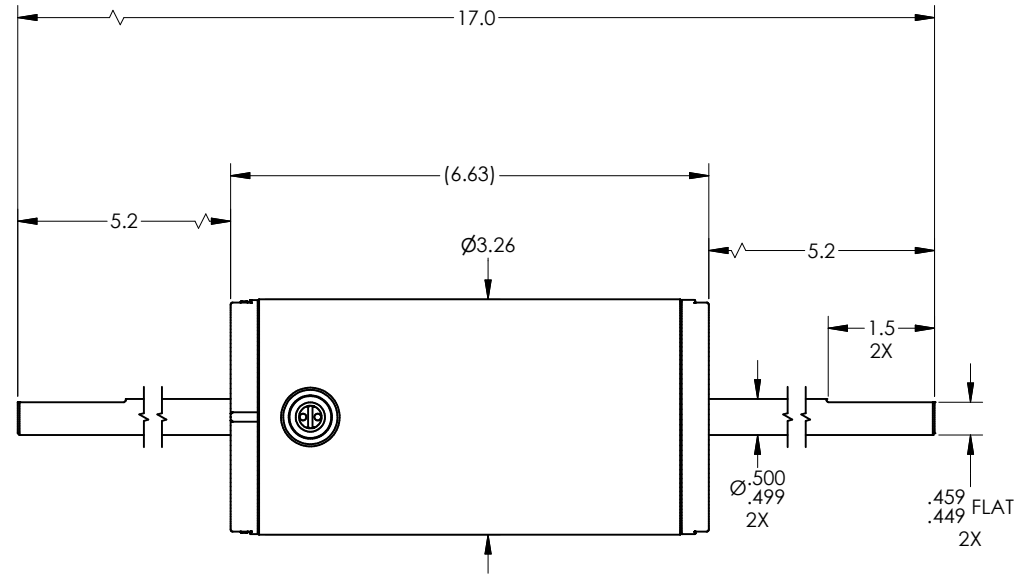
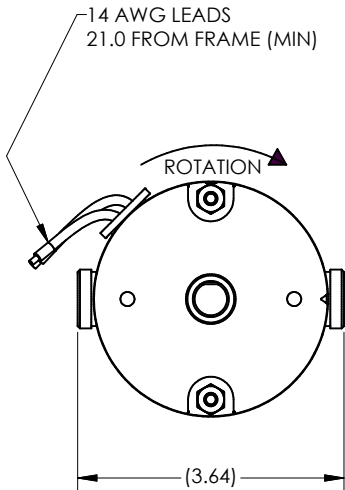




THIS DOCUMENT AND THE INFORMATION CONTAINED HEREIN ARE PROPERTY OF MINNESOTA ELECTRIC TECHNOLOGY INC. AND MUST NOT BE REPRODUCED, COPIED, OR DISCLOSED TO OTHERS EXCEPT AS SPECIFICALLY AUTHORIZED BY MINNESOTA ELECTRIC TECHNOLOGY INC.

REVISION HISTORY					
REV	ECO	DATE	DESCRIPTION	DWR	CHKR
B	35045	10/16/1995	REDRAW ADD NOTE 1	PAB	-
B	-	8/3/2009	REDRAWN TO CURRENT MET AND ASME STANDARDS; NO CHANGE	DJG	-



- NOTES:
1. NICKEL PLATED SHAFT
 2. PART TO BE FREE FROM BURRS AND SHARP EDGES
 3. ALL EDGES C.02 MAX UNLESS SPECIFIED
 4. ALL CORNERS R.02 MAX UNLESS SPECIFIED

UNLESS OTHERWISE SPECIFIED		FIRST USED:	 MINNESOTA ELECTRIC TECHNOLOGY WWW.METMOTORS.COM MANKATO, MN 56001 USA	
ALL DIM ARE IN INCHES. INTERPRET DIM AND TOL PER ASME Y14.5M-1994. DO NOT SCALE.	TOLERANCES ANGLE - $\pm 1^\circ$ FRACTION - $\pm 1/64$ DECIMAL: .x = $\pm .05$.xx = $\pm .01$.xxx = $\pm .005$.xxxx = $\pm .0002/-0.0003$	JOB NO: MODEL NO: 3C-1217162E	DWG NO. 300-9909C-00	REV B v2
THIRD ANGLE PROJECTION		CREATED: AEF 3/25/1987	TITLE OUTLINE	SIZE C
		SOURCE PRINT:		SHEET 1 / 1