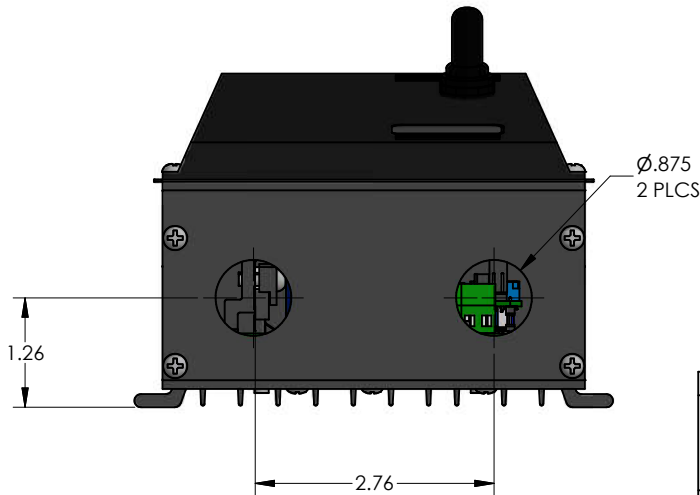
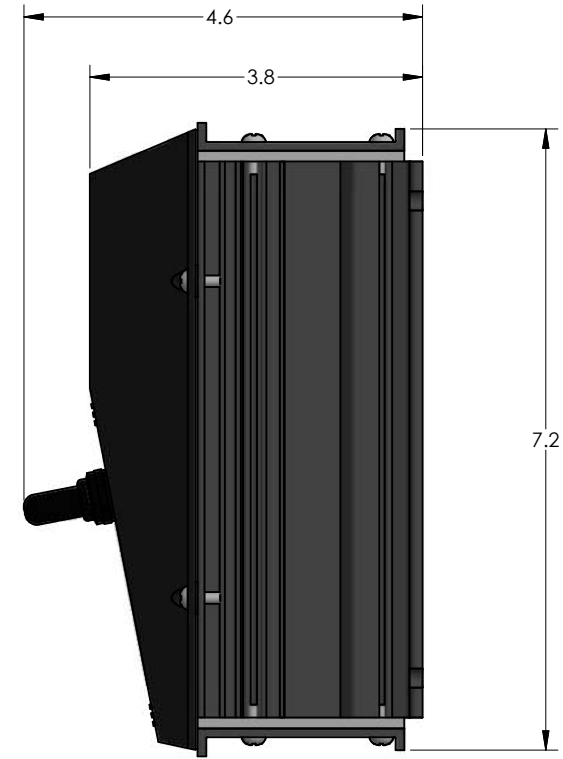
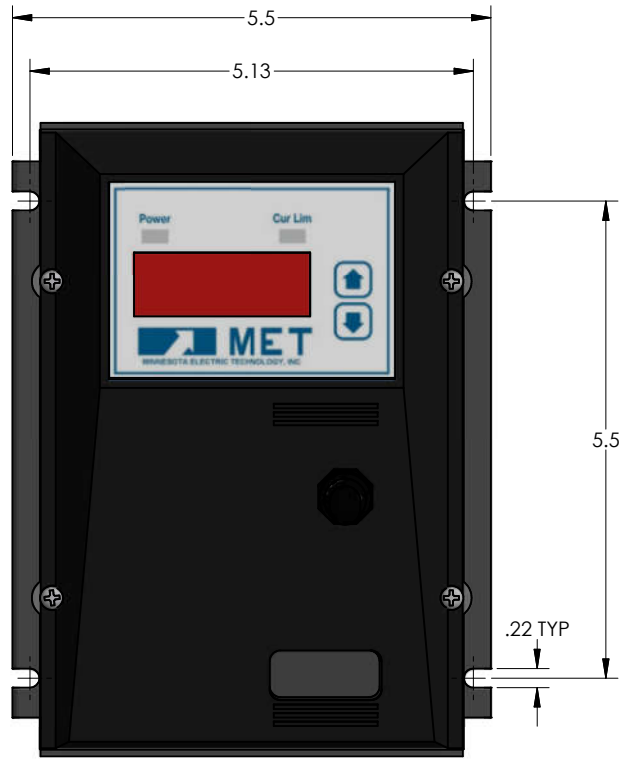




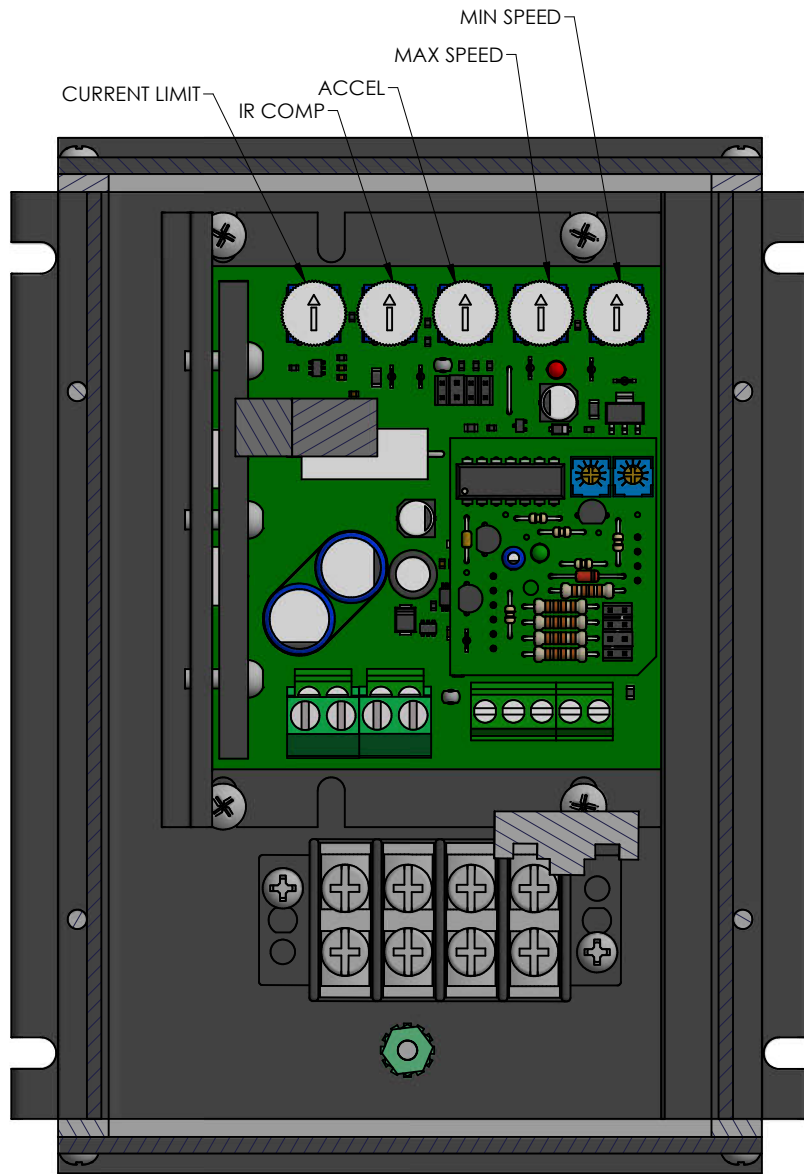
THIS DOCUMENT AND THE INFORMATION CONTAINED HEREIN ARE PROPERTY OF MINNESOTA ELECTRIC TECHNOLOGY INC. AND MUST NOT BE REPRODUCED, COPIED, OR DISCLOSED TO OTHERS EXCEPT AS SPECIFICALLY AUTHORIZED BY MINNESOTA ELECTRIC TECHNOLOGY INC.

REVISION HISTORY					
REV	ECO	DATE	DESCRIPTION	DWR	CHKR
A	-	-	Released	PLH	BP

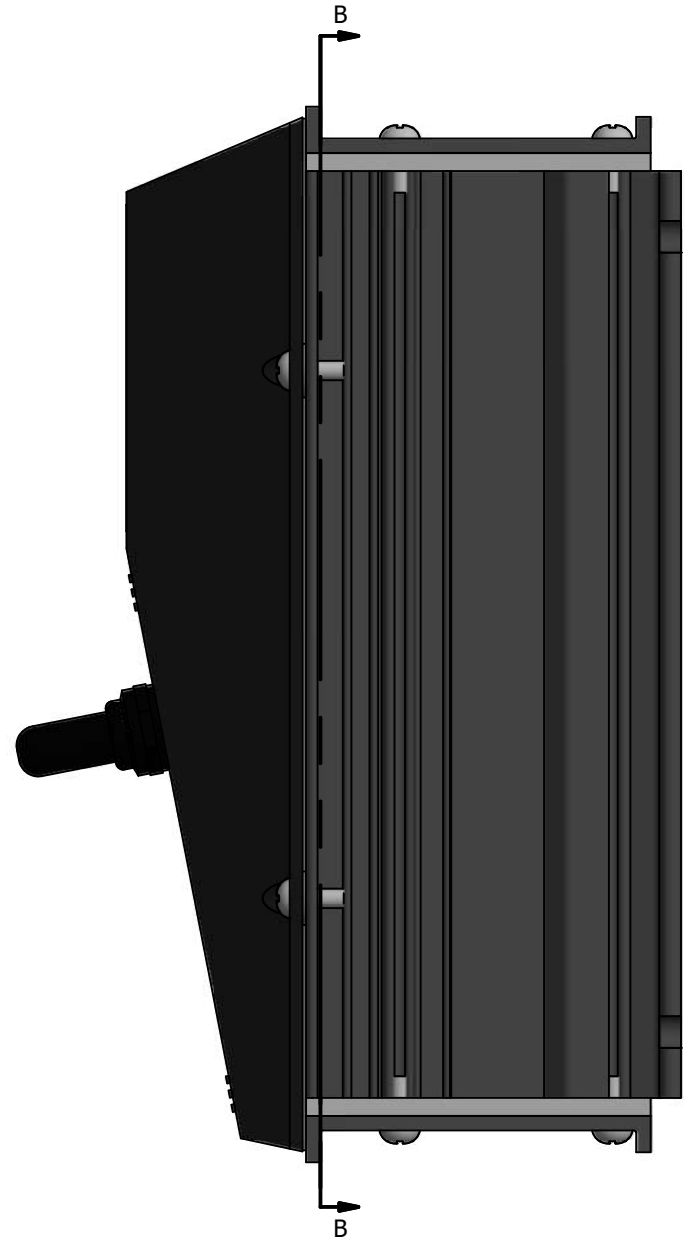


INPUT DC VOLTAGE: 12-48
OUTPUT DC VOLTAGE: 0 - INPUT VOLTAGE
AMPS: 10 AMPS CONTINUOUS

UNLESS OTHERWISE SPECIFIED		FIRST USED:	
ALL DIM ARE IN INCHES. INTERPRET DIM AND TOL PER ASME Y14.5M-1994. DO NOT SCALE.	TOLERANCES	JOB NO:	 MINNESOTA ELECTRIC TECHNOLOGY WWW.METMOTORS.COM MANKATO, MN 56001 USA
	ANGLE - ± 1°	MODEL NO:	
THIRD ANGLE PROJECTION	FRACTION - ± 1/64	CREATED:	DWG NO.
	DECIMAL:	pete 7/11/2017	326-12000-24
	.x = ± .05	MATERIAL:	TITLE
	.xx = ± .01	SOURCE PRINT:	CONTROLLER
	.xxx = ± .005		REV
	.xxxx = +.0002/-0.0003		A v16
			SIZE
			C
			SHEET
			1 / 2



SECTION B-B
SCALE 1.5



UNLESS OTHERWISE SPECIFIED		FIRST USED:	
ALL DIM ARE IN INCHES. INTERPRET DIM AND TOL PER ASME Y14.5M-1994. DO NOT SCALE.	TOLERANCES ANGLE - $\pm 1^\circ$ FRACTION - $\pm 1/64$ DECIMAL: .x = $\pm .05$.xx = $\pm .01$.xxx = $\pm .005$.xxxx = $\pm .0002/-0.0003$	JOB NO: MODEL NO:	MET MINNESOTA ELECTRIC TECHNOLOGY WWW.METMOTORS.COM MANKATO, MN 56001 USA
THIRD ANGLE PROJECTION		CREATED: pete 7/11/2017	DWG NO. 326-12000-24
		MATERIAL:	TITLE CONTROLLER
		SOURCE PRINT:	REV A v16
			SIZE C
			SHEET 2 / 2